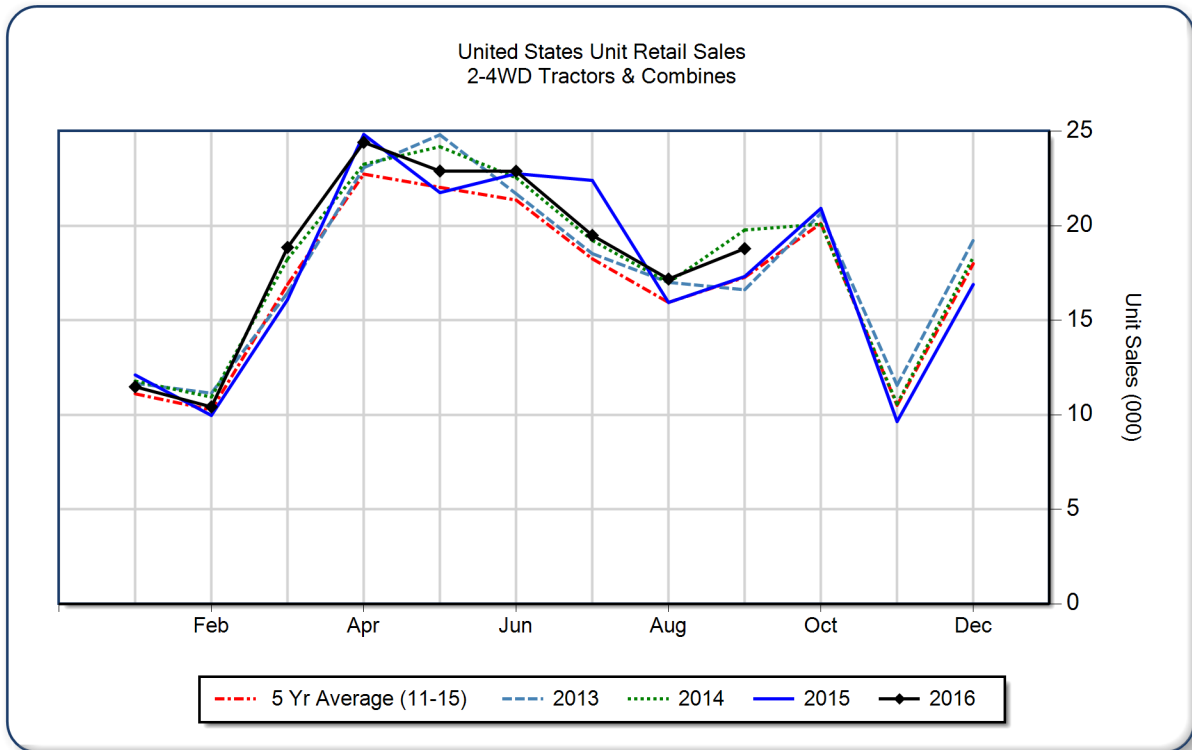




## AEM United States Ag Tractor and Combine Report September 2016

Copyright, AEM. All rights reserved. If data is referenced, please acknowledge AEM as the source.

	September			YTD - September			Beginning Inventory Sep 2016
	2016	2015	%Chg	2016	2015	%Chg	
<b>2WD Farm Tractors</b>							
< 40 HP	11,675	9,994	16.8	105,144	94,172	11.7	70,434
40 < 100 HP	5,016	4,826	3.9	42,749	44,690	-4.3	36,917
100+ HP	1,475	1,592	-7.3	13,995	18,102	-22.7	10,413
<b>Total 2WD Farm Tractors</b>	<b>18,166</b>	<b>16,412</b>	<b>10.7</b>	<b>161,888</b>	<b>156,964</b>	<b>3.1</b>	<b>117,764</b>
<b>4WD Farm Tractors</b>	<b>174</b>	<b>212</b>	<b>-17.9</b>	<b>1,467</b>	<b>2,169</b>	<b>-32.4</b>	<b>763</b>
<b>Total Farm Tractors</b>	<b>18,340</b>	<b>16,624</b>	<b>10.3</b>	<b>163,355</b>	<b>159,133</b>	<b>2.7</b>	<b>118,527</b>
<b>Self-Prop Combines</b>	<b>451</b>	<b>690</b>	<b>-34.6</b>	<b>3,051</b>	<b>4,027</b>	<b>-24.2</b>	<b>1,176</b>



The AEM Ag Tractor and Combine Report is provided monthly and is derived from AEM member companies through proprietary statistical reporting programs. The data is provided by AEM members and represents preliminary monthly retail sales of Ag equipment. Separate reports are available for the U.S., Canada and Russia. For more information, please visit: <http://www.aem.org/MarketInfo/Stats/AgTractorCombine/>. Attention media: to speak with an AEM spokesperson about the data, please contact Pat Monroe at [pmonroe@aem.org](mailto:pmonroe@aem.org).